

THE YEAR IN REVIEW

SCHEMA 2006-2007

SMITH COLLEGE MUSEUM OF ART

SCheMA

2006-2007

Acquisitions 3 Art Gifts & Purchases 7 Museum at a Glance 15 Fashioning Tradition 16 Innovative Programs 18
Leadership & Giving 24 Gifts to the Museum 26 Members 28 Exhibitions 31 Staff 32 Student Assistants 33

Art and Object Photography: Petegorsky & Gipe ✎ Exhibition Photography: Stephen Petegorsky ✎ Event and Candid Photography: Derek Fowles
Design: Radwell Communication by Design ✎ Publication Coordinator: Margi Caplan ✎ Editor: Rebecca Pierik

FROM THE DIRECTOR

Inquiry and learning are at the heart of what the Smith College Museum of Art (SCMA) offers. This year's annual report, *SCheMA 2006–2007*, is lined with stories that illustrate how the Museum is furthering its mission to promote learning, understanding and enjoyment of art among an ever-broadening audience.

Through the 2006–2007 academic year, the Museum continued to serve as a tremendous resource for teaching and learning on Smith's campus. At the same time, more and more visitors from across the community and around the country found their way to our galleries, classrooms, and lecture halls. Our many programs—from the Dulcy B. Miller Lecture in Art and Art History, featuring investigations of the art of Hieronymous Bosch, to a screening of the documentary film *The Rape of Europa*—drew record audiences. The nearly 1,500 guests who joined us in February for the launch of *Beyond Green: Toward a Sustainable Art* made tangible the special role our Museum plays as a gathering place for the College and the community.

Our multi-year initiative to expand the presence of Asian art in our galleries blossomed this year with a series of exciting projects and programs. Consultant and scholar Roger Keyes reviewed the Museum's Japanese print collection, which led to the discovery of a number of rare prints, most notably the only impression in the United States of Hokusai's *Clear Weather, Southern Breeze* (the first iteration of what would evolve into the better known *Red Fuji*). Students and visitors had the opportunity to study Buddhist art, both through the ongoing loan of a ninth-century Javanese Buddha and through the special exhibition



Jessica Nicoll, Director and Chief Curator

Aesthetics of the Sacred: The Buddhist Art of Tibet. This exhibition was curated by Marilyn Martin Rhie, Jessie Wells Post Professor of Art and East Asian Studies, in honor of the Dalai Lama's visit to Smith in May. The exhibition *Fashioning Tradition: Japanese Tea Wares of the Sixteenth and Seventeenth Centuries*, described on page 16, gave students and faculty unique opportunities to study the history and rituals of the Japanese tea ceremony through the exquisite objects associated with it.

The Museum is indebted to the many donors whose generous gifts of artwork enriched our collection this year. One addition, Georgia O'Keeffe's *Pink Moon Over Water*, is a singular example of how the generosity of collectors continues to transform our holdings. The gift of Dr. Nancy Burton Esterly '56 on the occasion of her 50th reunion, this early O'Keeffe painting shows the artist representing the landscape in increasingly abstract terms. The painting, along with the two O'Keeffe oils already in the collection, joins works by other members of the Stieglitz circle, including Arthur Dove and Marsden Hartley, in documenting the development of American modernism. The full scope of gifts of artworks during the past year is too large to describe here, but each gift has enhanced the teaching value of our collection. A listing of acquisitions, both through gift and purchase, begins on page 7.

The purchase of the medieval reliquary, discussed on page 5, represents the achievement of one of our highest collecting priorities. The acquisition was the culmination of a process that began a year earlier when the Museum received a substantial gift from Louise Ines Doyle '34. Miss Doyle had long been a friend to SCMA, underwriting the purchase in 1952 of Corot's *Dubuisson's Grove at*

Brunoy, giving funds for a Museum gallery and following the process of locating and researching the Limoges reliquary with interest. It was with great sadness that, as we were preparing *SCheMA 2006–2007*, we learned of Miss Doyle's death in July at the age of ninety-five. A generous philanthropist, she will be remembered not only for her contributions to our Museum but for her support for land conservation efforts in Massachusetts, commemorated by the Doyle Conservation Center in her home community of Leominster.

This annual report is filled with snapshots of our dynamic and continually evolving community. Our extraordinary progress this past academic year is directly attributable to our staff, students, faculty, volunteers, interns, Members, Visiting Committee and donors, who collectively have developed our Museum to world-class levels. I extend heartfelt gratitude to each individual who helped to sustain and advance the Smith College Museum of Art this year and throughout its history.

Jessica Nicoll

Director and Chief Curator

Smith College Museum of Art

ACQUISITION



Georgia O'Keeffe. American, 1887–1986.
Pink Moon Over Water, 1923. Oil on canvas.
Gift of Dr. Nancy Burton Esterly, class of 1956.

Georgia O'Keeffe: *Pink Moon Over Water*

The generous gift of Dr. Nancy Burton Esterly '56 *Pink Moon Over Water* is the third painting by Georgia O'Keeffe to enter the Museum's collection, joining *Squash Blossoms I* (1925) and *Grey Tree, Fall* (1948). *Pink Moon Over Water* was inspired by a month's stay by the artist at York Beach, Maine, in September 1923, after a summer spent in Lake George with her partner and soon-to-be husband, the photographer and art dealer Alfred Stieglitz.

Pink Moon Over Water is a relatively rare Maine landscape in O'Keeffe's work. Most of her landscapes in the years before 1929, when she began traveling to New Mexico, depict the lush, rolling hills around Lake George. The Museum's painting shares with the Adirondack landscapes a simplification of form, with elements of the terrain treated summarily as broad shapes. *Pink Moon Over Water* builds its composition from below with a series of three hillocks or rises in the landscape, above which the ocean and sky appear, blending one into the other. The horizon line is established by the topmost edge of the pink reflection of the moon in the water, and by a very subtle shift from the blue of the sea into the blue of the sky.

Pink Moon Over Water is closely related to a 1922 pastel, *Sun Water Maine*, which is a similar composition, but a daylight scene, with a yellow-rimmed, green sun shining down on the water. As O'Keeffe scholar Barbara Buhler Lynes notes: "O'Keeffe sometimes developed subjects first in pencil, and then in charcoal and pastel before rendering them in oil, and with *Pink Moon Over Water*, she refined a theme she had already addressed in pastel."

Linda Muehlig, Associate Director for Curatorial Affairs and
Senior Curator of Painting and Sculpture, SCMA



ACQUISITION

Reliquary Shrine of the Judgment of Solomon

This past year the Smith College Museum of Art purchased an early 13th-century reliquary, adding a significant example of medieval enamel and metalwork to its collection. Its purchase was made possible through the generosity of Louise Ines Doyle '34, who in making her gift expressed hope that it might support the acquisition of a medieval work of art. Miss Doyle's inclination aligned perfectly with the Museum's desire to enhance its medieval holdings. Professor Brigitte Buettner, who teaches medieval art at Smith, located the reliquary during the summer of 2006 at the renowned gallery of Brimo de Laroussilhe in Paris.

Gothic in style, this small shrine was made in the region of Limoges in central France between 1200-1210. It served as a precious container for a relic, a holy fragment from the body of a saint or from an object associated with a saint. A relic could also be a memento from a sacred place, such as small rocks or soil from a biblical site in the Holy Land. The interior of this reliquary is accessed by a lower back panel fitted with a lock. The purpose of the lock was to keep the relic inside secured from the over-eager pilgrim or the ambitious thief. While we do not know where this shrine was preserved in the Middle Ages, its more recent history and provenance have been traced to collections in Switzerland, England, and New York.

The shrine is made up of enamel plaques nailed onto a house-shaped wooden core, with figures of saints appearing on the roof and gabled ends. The crest at

the top is a modern replacement, which is not unusual given the vulnerability of the thin strip of metal. The type of enamel is *champlevé*, whereby the cells of a design are carved directly out of the metal base, leaving raised beds to separate the colors. (The term *champlevé* comes from the French for "raised field.") The cells are then filled with powdered glass, the whole piece fired, and the surface smoothed and polished. Limoges was a productive center of *champlevé* enamel, and by the late 13th century the region's enamel vessels and reliquaries were found in churches throughout Europe. This shrine is exceptional for its early date and remarkably good condition.

The main plaque on the front of the shrine depicts a unique scene, most likely the Judgment of Solomon. Here Solomon sits enthroned at the far left while an executioner threatens the baby in the cradle at his feet to the consternation of the women at the right. This scene is the only one of its kind known to exist on a Limoges reliquary, which makes this shrine a great object for study by scholars and students alike.

In fall 2007 Brigitte Buettner's students will investigate the shrine in her interdisciplinary course on the art of relics and reliquaries in the medieval West, a class she has taught since 1994. In Buettner's course, students learn to appreciate the wonderful creativity that went into the making of medieval reliquaries. They read about the challenges and rewards experienced by pilgrims traveling to



faraway “popular” shrines or to humble local sanctuaries. They learn of the power of miracle-working bones and blood, of friendly or vindictive saints. They also learn of the fervent defenders of the cult of relics as well as more skeptical and satirical voices. This year, Buettner’s course culminates in a small exhibition, for which the students research and write a series of wall texts exploring the larger artistic, iconographic and cultural contexts of the Limoges shrine.

Many aspects of medieval art, history, and religion are embodied by this reliquary, and can be used in teaching across various disciplines. The Limoges shrine serves as a potent example of enamel and metalworking techniques as well as workshop practices and anonymous art production. It also gives students insight into the powerful role of the medieval Church, the swearing of oaths upon reliquaries and many other facets of daily life in the 13th century. As such, this small, precious reliquary, the only example of its kind to be found in the region, is a remarkable and welcome addition to the collection.

Brigitte Buettner
Priscilla Paine Van der Poel Professor of Art History, Smith College

Kelly Holbert, Ph.D. Medieval Art History
Exhibition Coordinator, SCMA

Unknown. French, early 13th century.
Reliquary; Châsse with Judgment of Solomon, c. 1200–1210.
Champlevé enamel on copper.
Purchased with the gift of Louise Ines Doyle, class of 1934.

page 5: front view
page 6: rear views

ART GIFTS & PURCHASES

DECORATIVE ARTS

STONE, Arthur J. American, 1847–1938
Bowl, c. 1910
Sterling silver
Gift of Patricia Ross Pratt, class of 1951

UNKNOWN. French, 13th century
Reliquary; Châsse with Judgment of Solomon, c. 1200–1210
Champlevé enamel on copper
Purchased with the gift of Louise Ines Doyle, class of 1934

DRAWINGS

BAILEY, William. American, born 1930
Still Life, Piazza San Francesco, 1982
Casein on paper
Gift in loving memory of Mrs. Rita Rich Fraad, class of 1937

BOUGUEREAU, Elizabeth Jane Gardner. American, 1851–1922
Le Coupe Improvisée, 1884
Ink on paper
Purchased with the Carol Ramsay Chandler Fund

BRICHER, Alfred Thompson. American, 1837–1908
Untitled (shore scene), c. 1890
Brush with ink and wash over graphite on card stock
Gift of Priscilla Cunningham, class of 1958, in honor of Ann Johnson

DAVIES, Arthur Bowen. American, 1862–1928
The Female Figure in Three Positions, n.d.
Black and white pastel on blue paper
Gift of Gay Flood, class of 1957, in memory of her mother, Lucy Dycker Flood

DOVE, Arthur Garfield. American, 1880–1946
Study for Steam Shovel Fort Washington, 1932
Watercolor and ink on paper
Gift of Toni Dove

FREEMAN, Don. American, 1908–1978
Untitled, after Rue Transnonain, April 15, 1834
by Daumier, n.d.
Crayon and gouache on paper
Gift of George M. Friend

JACQUETTE, Yvonne Helene. American, born 1934
Freighter at Night, 1981
Pastel on toned paper
Gift of Susan L. Brundage, class of 1971, and Edward C. Thorp

MICHAUX, Henri. Belgian, 1899–1984
Untitled, 1972
Pastel on paper
Gift of Susan L. Brundage, class of 1971, and Edward C. Thorp

RESNICK, Donald. American, born 1928
Sandy Road, January 1978
Rough Trail, c. 1993
Pen and ink on paper
Gift of Donald Resnick

THAYER, Abbott Henderson. American, 1849–1921
Cat Held in Hands; verso, Sketch of a Foot, n.d.
Graphite on paper
Gift of Marjory Gorman Stoller, class of 1957

UNKNOWN. Indian artists, 18th–19th century
The Unveiling of Beauty, last quarter of 18th century
Princess on a Terrace with Two Attendants, mid-18th century
Krishna and the Cowgirls, 1719

Mistress and Confidante Seated on Carpet in Courtyard, c. late 18th century
Seated Ruler and Attendants, c. later 19th century
Color and gold on paper
Bequest of John Kenneth Galbraith

YARDE, Richard Foster. American, 1939–
Otelia Cromwell, 2002
Watercolor on paper
Commissioned by Smith College in honor of Otelia Cromwell, class of 1900

PAINTINGS

ANDOE, Joe. American, born 1955
Untitled (Tulip), 1989
Oil on linen
Gift of Valerie T. Diker, class of 1959, and Charles Diker

ANDRÉ, Jules. French, 1807–1869
Landscape, 1865
Oil on wood panel
Gift of Elizabeth E. Hopkins

BECKMANN, Hannes. American, born Germany, 1909–1976
Floral Geometry, 1965
Acrylic on Masonite
Gift of Margaret McNeil Boyer, class of 1958

CLARE, Oliver. British, c. 1853–1927
Fruit, n.d.
Oil on canvas
Gift of Beth S. Nelkin, class of 1965, and Arthur L. Nelkin



Left: Rockwell Kent. American, 1882–1971.
Untitled, c. 1903.
Oil on wood cigar box lid.
Gift of Marjory Gorman Stoller, class of 1957.

Right: Sonya Noskowiak.
American, born Germany, 1900–1975.
Junk Store Front Window, n.d.
Gelatin silver print.
Gift of Nicole Moretti Ungar,
class of 1982, and Jon Ungar.



Larry Fink. American, born 1941.
Teen Party, Oslins, PA, June 1977,
printed in 1980. Gelatin silver print.
Gift of Mark Reichman.

KENT, Rockwell. American, 1882–1971
Two untitled landscape studies, c. 1903
Oil on wood cigar box lid
Gift of Marjory Gorman Stoller, class of 1957

MOUNT, William Sidney. American, 1807–1868
Solomon Townsend Nicoll, 1846
Oil on canvas
Gift of DeLancey Nicoll III in honor of Jessica Fleming Nicoll,
class of 1983

O'KEEFFE, Georgia. American, 1887–1986
Pink Moon Over Water, c. 1923
Oil on canvas
Gift of Dr. Nancy Burton Esterly, class of 1956

PORTER, Katherine. American, born 1941
Three Days of Insistence, January 1977–August 1978
Oil, pencil, charcoal and collaged elements on
cotton duck canvas
Gift of Rita Kamins Robert, class of 1951,
in memory of Samuel Robert

UNKNOWN. American, late 18th–19th century
Rhode Island Man, c. 1820
Oil on wood panel
Gift of Jane Ann Cahill-Blumenfeld, class of 1944

UNKNOWN. Tibetan artists, 17th–19th century
Tangka: Shakyamuni Buddha with Disciples and Arhats,
late 17th or early 18th century
Tangka: Padmasambhava in the Copper Mountain Paradise,
c. 18th–19th century
Color and gold on cloth
Bequest of John Kenneth Galbraith

PHOTOGRAPHS

BARROW, Thomas. American, born 1938
Two photographs from the series *Pink Stuff*,
1960 and 1973–1977
Two photographs from the series *Pink Dualities*,
1960 and 1976
Pink tinted gelatin silver prints
Destructive Interference, 1988/1990
Unique spray-painted photogram
Springerville Variant, 1982
Photolithograph
Gift of Nicole Moretti Ungar, class of 1982, and Jon Ungar

COFFIN, Peter. American, born 1972
Untitled, 2006
Mixed media; photo album, color prints
Gift of Jessica Nicoll, class of 1983, through the generosity
of Regina Taylor and Peter Norton

DENES, Agnes. American, born 1938
Two photographs from *Wheatfield—A Confrontation:*
Battery Park Landfill, Downtown Manhattan, 1982
C-prints
Purchased with the Josephine A. Stein, class of 1927,
Fund in honor of the class of 1927

FINK, Larry. American, born 1941
Club Cornish, New York City, February 1977, 1977
(printed in 1989)
Allentown Museum, Pennsylvania, December 1975, 1975
(printed in 1983)
Vintage gelatin silver prints
Gift of Holly and James Bogin

FINK, Larry. American, born 1941
Washington, D.C., February 1975, February 1975
(printed in 1983)

Teen Party, Oslins, PA, June 1977, June 1977
(printed in 1980)
Gelatin silver prints
Gift of Mark Reichman

FINOCCHIARO, Mario. Italian, 20th century
Man Under Elevated Pier at Beach, c. 1950s
Rotaie [Railroad Tracks], c. 1950s
Self-Portrait with Open Mouth, c. 1950s
Woman Paying (cash in hand), c. 1950s
Crowd Pulling an Altar Down the Street, c. 1970s
Vintage gelatin silver prints
Gift of Nicole Moretti Ungar, class of 1982, and Jon Ungar

GROOVER, Jan. American, born 1943
Untitled, 1989
Palladium platinum print
Untitled, 1991
Gelatin silver print
Gift of Diana C. Bulman

KHAZEM, Jean-Pierre. French, born 1968
First Ladies: Barbara, 2004
C-print on Fuji Flex paper
Gift of Angela K. Westwater, class of 1964

KLUTE, Jeannette. American, born 1918
Two photographs from *Woodland Portraits* series, c. 1950s
Trailing Arbutus, c. 1950s
Vintage dye transfer prints
Gift of Mark Reichman

LEVINSTEIN, Leon. American, 1913–1988
Coney Island, c. 1980
Gelatin silver print
Gift of Holly and James Bogin

LEVINSTEIN, Leon. American, 1913–1988
Rockefeller Center, 1956 (printed c. 1980)
The Screen, Child in Window, Lower East Side, 1951
(printed c. 1980)
Mardi Gras, New Orleans, 1975 (printed c. 1980)
Gelatin silver prints
Gift of Alexandra and George Stephanopoulos

LYON, Danny. American, born 1942
Day Room, 1968 (printed 1969)
Heat Exhaustion, 1968 (printed 1969)
Heat Exhaustion (man being carried by prisoners),
1968 (printed 1969)
Inmate outside Warden's Office, About to be Transferred
by Local Authorities, 1968 (printed 1969)
Ramsey, 1968 (printed 1969)
The Yard, 1968 (printed 1969)
Young Boss, 1968 (printed 1969)
Gelatin silver prints
Gift of Nicole Moretti Ungar, class of 1982, and Jon Ungar

MARCUS, Caleb Cain. American, 20th century
A Painting for a King (Humayun's Tomb, India), 2005
The Weight of a Pigeon (Ajanta, India), 2005
C-prints
Gift of Nicole Shearman, class of 1987, and Nicholas Fluehr

MARKOV-GRINBERG, Mark. Russian, 1907–2003
The Oath of War (Soviet soldier kissing his rifle), 1943
(printed later)
Old Man of the Volga River, 1939 (printed later)
Public Letter to a Slacker from a Record Breaking Collective
Farm, Stalingrad Region, 1933 (printed later)
Ferrotyped gelatin silver prints
Gift of Holly and James Bogin

MARKOV-GRINBERG, Mark. Russian, 1907–2003
Russian Troika (horse carriages in the snow), 1934
(printed later)
Statue of a Woman with an Oar, 1930 (printed later)
Stone Flower Fountain, 1953 (printed later)
Traffic Policeman on Old Arbat Street, Moscow, Russia,
1936 (printed later)
The Turning Point of History, 1935 (printed later)
Ferrotyped gelatin silver prints
Gift of Nicole Moretti Ungar, class of 1982, and Jon Ungar

MARKOV-GRINBERG, Mark. Russian, 1907–2003
Nikita Izotov, Distinguished Miner of Donbass Coal Region,
Ukraine, 1934 (printed later)
Old Man of the Volga River, Russia, 1939 (printed later)
Ferrotyped gelatin silver prints
Gift of Mark Reichman

NAGATANI, Patrick. American, born 1945
Two photographs from *Nuclear Enchantment*, 1990
Ilfocolor prints
Four photographs from *Video Site Documentation*,
1985–2001
Chromogenic (Fujicolor Crystal Archive) prints
Eleven photographs from *Ryoichi Excavations*, 1985–2001
Toned gelatin silver prints
Gift of Nicole Moretti Ungar, class of 1982, and Jon Ungar

NOSKOWIAK, Sonya. American, born Germany, 1900–1975
Junk Store Front Window, n.d.
Untitled (Back Yards, San Francisco), n.d.
Machinery, n.d.
Vintage gelatin silver prints
Gift of Nicole Moretti Ungar, class of 1982, and Jon Ungar

PARR, Martin. English, born 1952
Untitled (frosted cookie) from the *Food Series*, 1995
C-print
Gift of Janet Borden, class of 1973

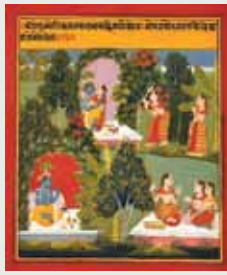
ROSS, Anne. American, born 1933
Stairway, 2001
Inkjet print
Gift of Janice Carlson Oresman, class of 1955

SANDER, August. German, 1876–1964
Five artist portraits, 1924–1930 (printed 1974)
Gelatin silver prints
Gift of Mark Reichman

SHERMAN, Cindy. American, born 1954
Untitled (#123A), 1983
Untitled (#130), 1983
Ektacolor prints
Gift of Valerie T. Diker, class of 1959, and Charles Diker

SHIELDS, William Gordon. American, 1883–1947
Boats on Water, c. 1910s
Corn Field, c. 1910s
Farm House, Trees and Pond, c. 1910s
Gladys Shields, c. 1910s
Gladys Shields Looking at a Rose, c. 1910s
Self-Portrait, Standing, c. 1910s
View of the Palace of Fine Arts, San Francisco, c. 1910s
Matte finish warm-toned gelatin silver prints
Tree Leaning Over Water, Leafy Trees, c. 1910s
Bromoil print
Gift of Nicole Moretti Ungar, class of 1982, and Jon Ungar

SIMMONS, Laurie. American, born 1949
Study for Long House (Bedroom with Mirror), 2002
Cibachrome mounted on plexiglass
Purchased with gifts from Laura Resnic Brounstein,
class of 1984, and the John W. Cavanaugh Family
Foundation (Lisa Cavanaugh, class of 1978)



Left: Laurie Simmons. American, born 1949.
Study for Long House (Bedroom with Mirror), 2002.
Cibachrome mounted on plexiglass.
Purchased with gifts from Laura Resnic Brounstein, class of 1984, and the John W. Cavanaugh Family Foundation (Lisa Cavanaugh, class of 1978).

Right: Artist unknown. Indian, 19th century.
Seated Ruler and Attendants, c. late 19th century.
Color and gold on paper.
Bequest of John Kenneth Galbraith.

SMITH, Michael A. American, born 1942
Near Frenchtown, New Jersey, 1973
Manomet Beach, Massachusetts, 1974
Shore Acres, Oregon, 1979
Sequoia National Park, California, 1982
Broward County, Florida, 1985
Atlanta, Georgia, 1989
New Orleans, 1989
Doylestown, Bucks County, 1992
Springtown, Pennsylvania, 1995
Monte Amiata and Val d'Orcia, Tuscany, 2001
Gelatin silver prints
Gift of Nicole Moretti Ungar, class of 1982, and Jon Ungar

STIVERS, Robert. American, born 1953
Two photographs from *Series 6*, 2000
Two photographs from *Series 5*, 1991–1995
Gelatin silver prints
Gift of Alexandra and George Stephanopoulos

STIVERS, Robert. American, born 1953
Ten photographs from *Series 5*, 1992–1995
Gelatin silver prints
Gift of Diana Silver

STIVERS, Robert. American, born 1953
Ten photographs from *Series 5*, 1991–1997
Two photographs from *Series 6*, 1997
Nine photographs from *L.A. Series*, 1987–1997
Gelatin silver prints
Gift of Eric Alterman

STIVERS, Robert. American, born 1953
“O” (L)-g (a-e), 2002
Gelatin silver print
Gift of Mark Reichman

WINOGRAND, Garry. American, 1928–1984
Older Woman in a Bathing Suit
from *Women are Beautiful*, 1975 (printed 1981)
Gelatin silver print
Gift of Nicole Moretti Ungar, class of 1982, and Jon Ungar

WINOGRAND, Garry. American, 1928–1984
Thirty-nine photographs from the series *Women are Beautiful*, 1975 (printed 1981)
Gelatin silver prints
Gift of Ralph and Nancy Segall

POSTERS

APSIT, Aleksandr. Latvian, 1880–1944
The Tsar, the Priest and the Rich Man, 1918
Lithograph printed in color on paper
Purchased with the Elizabeth Halsey Dock,
class of 1933, Fund

KUKRYNISKY (Kupriyanov, Mikhail. Russian, 1903–1991;
Krylov, Porfiri. Russian, 1902–1990; and Sokolov, Nikolai.
Russian, 1903–?)
Pyshki i Shiski (Pastries and Bruises), c. 1943
Screenprint in color on paper mounted on canvas
Purchased with the Elizabeth Halsey Dock,
class of 1933, Fund

PET, A. Russian, 20th century
The Tsar, the Priest and the Kulak, 1918
Lithograph printed in black and blue on paper
Purchased with the Elizabeth Halsey Dock,
class of 1933, Fund

PRINTS

ARAKI, Shinko. Japanese, born 1960
Green Flora – V, n.d.
Aquatint and etching printed in color on paper
Gift of The Tolman Collection, Tokyo, in honor of
Hilary Tolman, class of 1987, on the occasion of
her 20th reunion

BASKIN, Leonard. American, 1922–2000
Five prints from *Indian Suite IV*, 1972
Lithograph printed in black on paper
Gift of Theodore M. Buck

BASKIN, Leonard. American, 1922–2000
Cheyenne Woman, 1993
Lithograph on paper
Gift of Lisa Unger Baskin in honor of Dr. Sarah E. Thomas,
class of 1970
Elizabeth Siddall, 1996
Etching printed in color on paper
Gift of Lisa Unger Baskin in memory of Meg Sanders,
Hampshire class of 2000
The Difference, from Howls & Whispers, 1998
Etching printed in black on Arches paper
Gift of Lisa Unger Baskin

BEDIA, José. Cuban, born 1959
Nfumbi Mpangui, 2003
Two-color lithograph printed on black Arches Cover
Printed and published by Tamarind Institute
Purchased with the Elizabeth Halsey Dock,
class of 1933, Fund

CATLETT, Elizabeth. American, born 1915
Gossip, 2004–2005
Epson inkjet print and photolithograph printed in color
on Somerset white paper
Gift of Janice Carlson Oresman, class of 1955

CHIKANOBU, Yoshu. Japanese, 1838–1912
The Emperor and Empress Meiji with Prince Haru, the Future Taisho Emperor, 1888
Woodcut printed in color on paper (triptych)
Purchased with the Carlyn and George Steiner
(Carlyn Koch, class of 1967) Fund,
in honor of Joan Koch Smith

DELSON, Elizabeth. American, 1932–2005
Blue Lagoon, 1982
Lagoon II, 1982
Color viscosity etchings on paper
Gift of Sidney L. Delson in memory of the artist,
Elizabeth Delson, class of 1954

EARLOM, Richard. British, 1743–1822; after Claude, called
Le Lorrain. French, 1600–1682
Untitled, from *Liber Veritatis*,
published September 1, 1775
Etching and mezzotint on paper
Gift of Margaret Waggoner

FORD, Walton. American, born 1960
Condemned, 2004–2007
Etching and aquatint printed in color on paper
Gift of Walton Ford through the Smith College
Print Workshop

FRANCO, Battista (called Il Semolei). Italian, 1498–1561
Landscape with Horseman and His Groom, n.d.
Etching printed in black on paper
Gift of Ann Vail and William J.O. Roberts, class of 1950

GOJO, Miki. Japanese, born 1967
The Nearing Mountain – I, n.d.
Lithograph printed in color on paper
Gift of The Tolman Collection, Tokyo, in honor of Hilary
Tolman, class of 1987, on the occasion of her 20th reunion

GOODMAN, Sidney. American, born 1936
Self Portrait, 1961
Struggle, 1961
He Wants to Know, 1962
Spanish Soul, 1962
Pieta, 1963
Arena, 1964
Girl in a Lounge, 1965
Postive/Negative, 1967
Woman in Bed, 1976
Bather, 1978
Bather, 1978
Lithographs printed in black on paper
Gift of Ann Dintenfass and Andrew Dintenfass

GUERRILLA GIRLS. American, 20th century
Portfolio: Guerrilla Girls, Most Wanted, 1985–2006
Lithographs printed on paper
Purchased with the gift of the Fred Bergfors and
Margaret Sandberg Foundation

GWATHMEY, Robert. American, 1903–1988
Tin of Lard, 1969
A Section of town, n.d.
Lithographs printed in black with brown and blue on paper
Petroushka, 1980
Silkscreen printed in color on paper
Gift of Ann Dintenfass and Andrew Dintenfass

HASAGEWA, Yuichi. Japanese, born 1945
Scenery 02-01, 2002
Woodblock printed in color on paper
Gift of The Tolman Collection, Tokyo,
in honor of Hilary Tolman, class of 1987,
on the occasion of her 20th reunion



Top: José Bedia. Cuban, born 1959.
Nfumbi Mpangui, 2003.
Two-color lithograph printed on black Arches Cover.
Printed and published by Tamarind Institute.
Purchased with the Elizabeth Halsey Dock, class of 1933, Fund.

Center: Yoshu Chikanobu. Japanese, 1838–1912.
The Emperor and Empress Meiji with Prince Haru, the Future Taisho Emperor, 1888. Woodcut printed in color on paper.
Purchased with the Carlyn and George Steiner
(Carlyn Koch, class of 1967) Fund, in honor of Joan Koch Smith.

Bottom: Janis Provisor. American, born 1946.
Scattered Petals, 1989.
Woodblock printed in color on silk with chine collé
mounted on rag paper.
Gift of Mrs. William A. Small Jr. (Susan Spencer, class of 1948).



Elizabeth Jane Gardner Bouguereau.
American, 1851–1922.
Le Coupe Improvisée, 1884.
Ink on paper.
Purchased with the
Carol Ramsay Chandler Fund.



Mel Silverman.
American, 1931–1966.
Manhattan Bridge, 1962.
Mixed media print in color on paper.
Gift of Elizabeth Hopkins.



Yvonne Helene Jacquette.
American, born 1934.
Freighter at Night, 1981.
Pastel on toned paper.
Gift of Susan L. Brundage, class of
1971, and Edward C. Thorp.



Lisa Sanditz. American, born 1973.
Infinite Cherry Blossoms, 2006.
Thirteen-color silkscreen with three
layers of hotstamp foil on 500 gsm
Somerset Satin paper.
Purchased with the Richard and Rebecca
Evans (Rebecca Morris, class of 1932)
Foundation Fund.

HAYTER, Stanley William. British, 1901–1988
Centauresses, 1944
Engraving and soft ground etching printed in color on paper
Purchased with the Elizabeth Halsey Dock,
class of 1933, Fund

HEIZER, Michael. American, born 1944
Swiss Survey #3, 1980–1983
Eleven-color offset lithograph and screenprint on paper
Purchased with the Josephine A. Stein, class of 1927,
Fund in honor of the class of 1927

HERBIN, Auguste. French, 1882–1960
Midi, 1959
Silkscreen printed in color on paper
Gift of Valerie T. Diker, class of 1959, and Charles Diker

HEYMAN, Daniel. American, born 1963
Eight prints from the *Abu Ghraib* series, 2006
Drypoints printed in black on Rives BFK paper
Gift of Wendy Kammerer, class of 1971

HOBBS, Morris Henry. American, 1892–1967
Daydreams, 1942
Graphite on paper
Daydreams, n.d.
Etching on paper
Daydreams, n.d.
Etched copper printing plate
Vanity, n.d.
Graphite on tracing paper
Vanity, n.d.
Etching on paper
Gift of Reed Isbell-Hobbs, class of 1962

IMAMURA, Yoshio. Japanese, born 1948
Pisces, from *The 12 Signs of the Zodiac*, n.d.
Etching and chine collé printed in color on paper
Gift of The Tolman Collection, Tokyo,
in honor of Hilary Tolman, class of 1987,
on the occasion of her 20th reunion

IWAMI, Reika. Japanese, born 1927
Afternoon of the Horizon, 1978
Autumn, 1978
Woodblocks printed in color on paper
Gift of The Tolman Collection, Tokyo,
in honor of Hilary Tolman, class of 1987,
on the occasion of her 20th reunion

KARHU, Clifton. Japanese, born 1927
Shimoda Beach, 1980
Woodblock printed in color on paper
Gift of The Tolman Collection, Tokyo,
in honor of Hilary Tolman, class of 1987,
on the occasion of her 20th reunion

KUITCA, Guillermo. Argentine, born 1961
Doble Teatro, 1997
Lithograph and etching printed in black on paper
Gift of Angela K. Westwater, class of 1964

LAWRENCE, Jacob. American, 1917–2000
Migrants Cast Their Ballots, 1976
Builders the Family, 1974
Confrontation at the Bridge, 1975
Silkscreens printed in color on paper
Gift of Ann Dintenfass and Andrew Dintenfass

LOPÉZ, Nicola. American, born 1975
Excerpts from the Flood I, 2006
Eleven-color lithograph on four polyester films
on white Rives BFK
Purchased with the Elizabeth Halsey Dock,
class of 1933, Fund

MAKUUCHI, Munio Takahashi. American, 1934–2000
*On Boys day I 'I.D.' with Rocky Mountain Salmon.../...So
where's the Salmon?*, 1985
Drypoint and etching printed in black on paper
Purchased with the Elizabeth Halsey Dock,
class of 1933, Fund

MAMMEN, Jeanne. German, 1896–1970
Eifersucht from *Les Chansons de Bilitis*
(*Jealousy* from *The Songs of Bilitis*), c. 1930
Lithograph printed in color on paper
Purchased with the Josephine A. Stein, class of 1927,
Fund in honor of the class of 1927

MASSON, André. French, 1896–1987
Petit génie du blé, 1942
Soft-ground etching with drypoint printed in black on paper
Gift of the estate of Emay Twining Buck, class of 1939

MORIMURA, Ray. Japanese, born 1948
Togetsukyo, 2005
Woodblock printed in color on paper
Gift of The Tolman Collection, Tokyo,
in honor of Hilary Tolman, class of 1987,
on the occasion of her 20th reunion

NAKAZAWA, Shin'ichi. Japanese, born 1956
Ratio – IX, n.d.
Ratio – VIII, n.d.
Etchings printed in color with silver and gold leaf on paper
Gift of The Tolman Collection, Tokyo,
in honor of Hilary Tolman, class of 1987,
on the occasion of her 20th reunion

NOLDE, Emil. German, 1867–1956
Eremit (Hermit), 1926
Lithograph printed in two colors on paper
Gift of the estate of Emay Twining Buck, class of 1939

O'CONNELL, George. American, born 1926
Winter, n.d.
Etching and drypoint printed in black on paper
Gift of Margaret Waggoner

ODA, Mayumi. Japanese, born 1941
Kannon and Golden Dragon, n.d.
Silkscreen printed in color on paper
Gift of The Tolman Collection, Tokyo,
in honor of Hilary Tolman, class of 1987,
on the occasion of her 20th reunion

OKADA, Marie. Japanese, born 1956
Balance, n.d.
Mica, n.d.
Etchings printed in color on paper
Gift of The Tolman Collection, Tokyo,
in honor of Hilary Tolman, class of 1987,
on the occasion of her 20th reunion

POND, Arthur. British, c. 1705–1758; and Knapton, George.
British, 1698–1778; after Giovanni Paolo Panini. Italian,
c. 1692–1765
Ruins with Figures, Plate 67 from *Seventy Prints in
Imitation of Drawings, 1734–1735*
Etching and woodcut on paper
Gift of Margaret Waggoner

PROVISOR, Janis. American, born 1946
Scattered Petals, 1989
Woodblock printed in color on silk chine collé
mounted on rag paper
Gift of Mrs. William A. Small, Jr.
(Susan Spencer, class of 1948)

SADANOBU I. Japanese, 1809–1879
Kabuki play Gion Sairei Shinkoki, n.d.
Woodcut printed in color on paper
Purchased with the Carlyn and George Steiner Fund
(Carlyn Koch, class of 1967) in honor of Joan Koch Smith

SAENREDAM, Jan after Cornelis Ketel. Dutch, c. 1565–1607
Allegory of Good and Evil Nature, n.d.
Engraving printed in black on paper
Purchased with the Elizabeth Halsey Dock,
class of 1933, Fund

SAITO, Noriko. Japanese, born 1973
Saturday, n.d.
Happy Insect – II, n.d.
Drypoints printed in color on paper
Gift of The Tolman Collection, Tokyo,
in honor of Hilary Tolman, class of 1987,
on the occasion of her 20th reunion

SÁNCHEZ, Juan. American, born 1954
I am Ame/Rican, 1999
Eight-color lithograph with chine collé on Goyu and
white Somerset satin
Purchased with the Elizabeth Halsey Dock,
class of 1933, Fund

SANDITZ, Lisa. American, born 1973
Infinite Cherry Blossoms, 2006
Thirteen-color silkscreen with three layers of hotstamp foil on
500 gsm Somerset Satin paper
Purchased with the Richard and Rebecca Evans
(Rebecca Morris, class of 1932) Foundation Fund

SHINODA, Toko. Japanese, born 1913
Drama, 1997
Esteem, 1997
Lithographs printed in color on paper
Gift of The Tolman Collection, Tokyo,
in honor of Hilary Tolman, class of 1987,
on the occasion of her 20th reunion

SILVERMAN, Mel. American, 1931–1966
Manhattan Bridge, 1962
Mixed media print in color on paper
Gift of Elizabeth Hopkins

SIMMONS, Gary. American, born 1964
Flaming Boom Box, 2005
Spade, 2005
Four-color lithographs printed on white Pescia paper
Purchased with the Elizabeth Halsey Dock,
class of 1933, Fund



Left: Martin Parr. English, born 1952.
Untitled (frosted cookie)
from the *Food Series*, 1995. C-print.
Gift of Janet Borden, class of 1973.

Right: George Segal. American, 1924–2000.
Mask of Leonard Baskin, 1978. Plaster.
Purchase and partial gift of the Estate of Leonard Baskin.

TACHIBANA, Seiko. Japanese, born 1964
Loiter # 2, 1997
Aquatint and etching printed in brown on paper
Gift of The Tolman Collection, Tokyo,
in honor of Hilary Tolman, class of 1987,
on the occasion of her 20th reunion

TAI, Inui. Japanese, born 1929
Village at a River (diptych), 1980s
Woodcut printed in black on two sheets of paper
Purchased with the Carlyn and George Steiner (Carlyn Koch,
class of 1967) Fund in honor of Joan Koch Smith

TAKAHASHI, Hiromitsu. Japanese, born 1959
Zobiki, 1998
Stencil printed in color on paper
Gift of The Tolman Collection, Tokyo,
in honor of Hilary Tolman, class of 1987,
on the occasion of her 20th reunion

WAKO, Shuji. Japanese, born 1953
Letter Under Fuji Over Seas, 1998
Lithograph printed in color on paper
Gift of The Tolman Collection, Tokyo,
in honor of Hilary Tolman, class of 1987,
on the occasion of her 20th reunion

WARRICK, Cheryl. American, born 1956
So Be It, 2007
Monotype in color on paper
Gift of Cheryl Warrick through the
Smith College Print Workshop

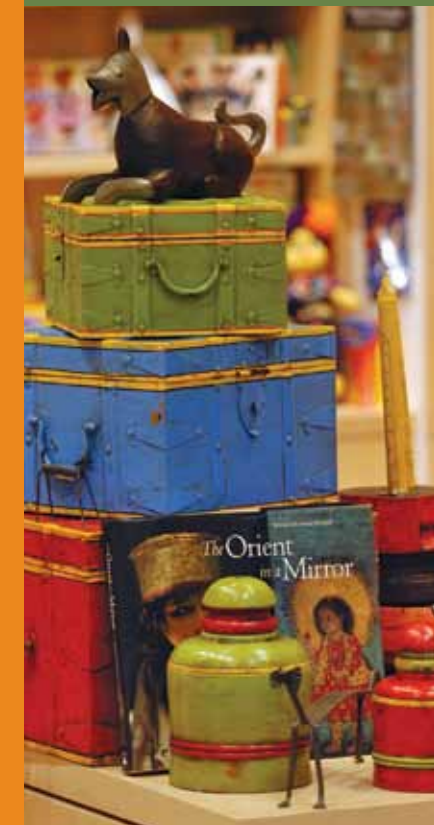
SCULPTURE

FRANK, Mary. American, born 1933
Daphne, n.d.
Ceramic
Gift of Suzi Schiffer Parrasch, class of 1982,
and Franklin Parrasch, in honor of her 25th reunion

ROSSER, Phyllis. American, born 1934
Shackleton's Dream, 2003
Driftwood
Gift of Gloria Steinem, class of 1956

SEGAL, George. American, 1924–2000
Mask of Leonard Baskin, 1978
Plaster
Purchase and partial gift of the Estate of Leonard Baskin

THE MUSEUM AT A GLANCE 2006–2007



Museum Shop merchandise appeals to visitors of all ages.

Total attendance	36,378	Family program visitors	1,609
Annual budget	\$2,311,339	Number of family programs	12
Tryon Associate Households	59	Total K-12 visitors	3,775
Member Households	963	Total K-12 group visits	168
Changing exhibitions	15	Total guided K-12 group visits	81
Acquisitions	377	Teacher program visitors	125
Gifts	311	Number of teacher programs	10
Purchases	65	Smith / Five College class visits and program attendance	2,736
Commission	1	Number of Smith / Five College visits and programs	180
Education Department		Museum-based Smith courses	5
Total participants in SCMA education programs and events	11,650	Smith Student Museum Educators	27
Number of education programs	439	Smith student Family Day volunteers	85
Adult program visitors	3,267		
Number of adult programs	57		

FASHIONING TRADITION



Since the Museum reopened in 2003 following the renovation and expansion of the fine arts center, its exhibition roster and programs have prominently featured non-western art alongside its rich holdings in European and American art. This diversification, a goal of the Museum's five-year strategic plan, reflects efforts to support the more global curriculum of the College. Guided by Samuel C. Morse, the Museum's curatorial consultant for Asian art and a professor at Amherst College, the Museum has been especially successful in presenting exhibitions of Asian, particularly Japanese, art.

Fashioning Tradition: Japanese Tea Wares from the Sixteenth and Seventeenth Centuries is the second of two shows curated by Professor Morse. The first, *Confronting Tradition: Contemporary Art from Kyoto*, shown in the fall of 2004, featured the work of artists who used traditional materials in new ways and involved the construction of a full-scale Zero fighting plane in the Museum's lower gallery. That exhibition was created to support a new course on Kyoto, taught by Smith Professor Tom Rohlich. This year's exhibition of Japanese tea wares supported another course—the first dual Smith/Amherst class—taught by Professors Morse and Rohlich. It was made possible by the generosity of lenders, including Peggy Block Danziger '62, and Richard Danziger, who lent the majority of the works in the exhibition.

Linda Muehlig
Associate Director for Curatorial Affairs and
Senior Curator of Painting and Sculpture, SCMA



The tea ceremony, known in Japanese as *chanoyu*, has been a central element of Japanese culture since the latter part of the 15th century. It brings together host and guests for a moment of repose and contemplation amid carefully selected works of art. To set the atmosphere, the host painstakingly chooses works of art to match the seasons and the tastes of his guests in a process known as *toriwase*, or the arrangement of objects.

Toriawase was the focus of the exhibition, *Fashioning Tradition: Japanese Tea Wares from the Sixteenth and Seventeenth Centuries*, on view in the Sacerdote Gallery throughout the spring 2007 semester. The exhibition included two *toriwase*: one for the intimate grass-hut style of tea ceremony, recreated in the gallery with a portable three-mat tea room borrowed from the Urasenke Foundation in New York; and one for a larger more formal setting, established by a raised platform covered with tatami mats and a six-fold screen entitled *Blinds Open by Azaleas*, which was borrowed from the collection of Peggy Block Danziger '62 and Richard Danziger. The exhibition included tea bowls, kettles, fresh water containers, vases, tea caddies and hanging scrolls drawn from the collections of the Danzigers, Sylvan Barnet and William Burto, The Art Complex Museum of Duxbury, Massachusetts and a private collection in New York.

Fashioning Tradition also provided an unprecedented opportunity for collaboration between the Smith College Museum of Art and Five College faculty. The course I co-taught with Professor Thomas Rohlich of the Department of East Asian Languages at Smith College took full advantage of the exhibition. The first meeting occurred in the exhibition gallery, and the students were asked to create their own *toriwase*, using works on display. Throughout the semester the

students returned frequently to the gallery to compare the works on display with objects they had studied in class. Each student in the seminar participated in a tea ceremony at the Wa-Shin-An Japanese Teahouse at Mount Holyoke College. The students also learned about the tea ceremony from two scholars from Japan: Kumakura Isao, Director of the Hayashibara Museum of Art in Okayama and the leading historian of the tea ceremony writing today; and Ienaga Shigemi, a professor at the International Center for Japanese Studies in Kyoto and an expert on the intellectual history of the Meiji era.

Japan can often seem remote to students in Northampton or Amherst. Slides fall short when presenting an art form such as the Japanese tea ceremony, which must be experienced with all the senses. The opportunity to teach with objects of such remarkable quality made the class a memorable experience for instructors and students alike.

Samuel C. Morse Consulting Curator for Asian Art, SCMA
and Professor, Departments of Art and Art History and
Asian Languages and Civilizations, Amherst College

Opposite page: Nagoshi Jomai.
Japanese, active 1751–1764.
Onishi Jogen. Japanese, 1720–1783.
Korean-Style Hearth and Kettle.
Cast iron and polished bronze.
Collection of Peggy Block Danziger,
class of 1962, and Richard M. Danziger.

INNOVATIVE PROGRAMS *Inspire Learning*

This year, SCMA embarked on a variety of program innovations to deepen visitors' experiences and broaden audience.

New public programs and performances, a juried student installation, and new online tools, such as an audio download feedback system, provided visitors with fresh ways to interact with and learn about art. These efforts led to increased collaboration between SCMA and Smith College faculty and staff. They also helped boost family, school and teacher program attendance by 18 percent.



Donald Knaack a.k.a. THE JUNKMAN entertains visitors with an interactive jam session using instruments he makes from discarded materials at the opening celebration of *Beyond Green: Toward a Sustainable Art*.

Going *Beyond Green*

To build momentum for the exhibition *Beyond Green: Toward a Sustainable Art*, SCMA convened a focus group of 28 Smith College faculty and staff members. The focus group initiated a number of collaborations that deepened the exhibition's impact across campus and in the community. Thanks to the dedication of focus group members, the Landscape Studies Program's Spring 2007 Semester 100-level lecture series was entirely devoted to speakers with expertise in the area of sustainability. The Campus Center also coordinated a hands-on activity for Smith students related to sustainability, and plans to use sustainability as a theme for the upcoming year's student programs.

A number of focus group members also joined Museum staff to jury the "*Beyond Green* Student Challenge," which resulted in an installation of student artwork created in response to the exhibition.

New Online Tools

With the goal of extending the Museum's offerings into the virtual world, Museum staff created a series of audio downloads and posted them on the SCMA website in 2006–2007. Andrew Guswa, Associate Professor of Engineering at Smith College, recorded his insights about the Fall 2006 exhibition *The Art of Structural Design: A Swiss Legacy*. A number of Smith College staff members—including Rachel Weston, Chair of GAIA, Katherine Thompson, House Coordinator of Hopkins House, and Gary Hartwell, Project Manager of the Green Team—joined SCMA Director Jessica Nicoll in creating online recordings about *Beyond Green: Toward a Sustainable Art*. All of these recordings explored and expanded on concepts and themes introduced by the exhibitions, while opening SCMA's doors to learners around the world.

Ann Musser, Curator of Education

2007 Tryon Prize Winners for Installation, Digital Media and Performance Art

Kelsey Siepser '07, *Eleusis*

Lila Dodge '09 and Rose Baldwin '09, *Tendency, Intention, Tendency, Intention*

Abby Walton '07, *Vertigo*

PUBLIC PROGRAMS

2006–2007 Highlights

September 29, 2006

Image and Devotion: Christian Art of Ethiopia Exhibition Opening Lecture and Reception
"The Face of Christ" by Dr. Gary Vikan, Director and Curator of Medieval Art, Walters Art Museum, Baltimore, MD

October 13, 2006

Lecture on *The Art of Structural Design: A Swiss Legacy* by David Billington, Gordon Y. S. Wu Professor of Civil and Environmental Engineering, Director of the Program in Architecture and Engineering, Princeton University

October 26, 2006

Lecture on the art, life, and world of Charlotte Soloman by Ellen Kaplan, Professor of Theatre, Smith College and Darcy Buerkle, Assistant Professor of History, Smith College

November 4, 2006

In conjunction with *The Art of Structural Design* and *Image and Devotion*
"Bridges!" Family Day

February 9, 2007

Beyond Green: Toward a Sustainable Art Exhibition Opening and Festivities, featuring a Family Junkjam Workshop and Concert with renowned percussionist Donald Knaack a.k.a. THE JUNKMAN

March 9, 2007

In conjunction with *Beyond Green*
Opening of "*Beyond Green* Student Challenge"
Juried Installation

March 27, 2007

Screening of *The Rape of Europa* at the Academy of Music, in collaboration with the Pioneer Valley Jewish Film Festival

March 31, 2007

In conjunction with *Beyond Green*
"*Beyond Green*" Family Day

April 4, 2007

Fourth Annual Dulcy B. Miller Lecture in Art and Art History
"Bosch's Enmity" by Joseph Leo Koerner, leading scholar of Northern Renaissance art

June 15, 2007

Medea and Her Sisters: Leonard Baskin's Images of Women
Exhibition Opening Lecture and Reception

"Jack of All Trades, Master of All: Artistic Versatility and Thematic Renewal in the Work of Leonard Baskin" by Andrew C. Weislogel, Ph.D., Assistant Curator/Master Teacher, Herbert F. Johnson Museum of Art, Cornell University



Left to right: Rebecca Benson, class of 2010, Emily Orzech, class of 2007, Rose Baldwin, class of 2009, and Lila Dodge, class of 2009.

Beyond Green Student Challenge Artists, Spring 2007

Rebecca Benson '10
Sustainable Chandelier
Wire, found objects, solar panels

Lila Dodge '09 and Rose Baldwin '09
Tendency, Intention, Tendency, Intention
Choreography, digital video, and photographs

Emily Orzech '07
Traveling to Shang-ra-li-la City, The Roof of the World Rebuilt, and Search for the Land Beyond the Clouds
Monoprints

Sophia LaCava-Bohanan '08
WMS.06
Inkjet prints on vellum

Beyond Green from a Student's Perspective

"Sustainable. Is that like when you make sure not to leave a stain on the environment?" asked an eager fourth grader the first time I led a tour of *Beyond Green: Toward a Sustainable Art* at the Smith College Museum of Art. Almost every week during the spring semester, I engaged students of all ages in conversations about environmental issues explored by artists in *Beyond Green*.

I began each tour by asking the students what they thought the term "sustainable" might mean. Their replies and the ensuing discussions allowed me to explore the interaction between art, environmentalism and museums. They also led me to a deeper understanding of my own personal and artistic involvement with environmental issues.

Over the 2006–2007 academic year I experienced the Museum from multiple perspectives. In the education department, I planned family events and wrote tour scripts. While interning

with the curatorial department I helped to install the *Beyond Green* exhibition. Each work was an artist's response to a scientific topic. I was deeply intrigued by the notion of reacting to scientific findings and discourse in an abstracted visual way. I also led tours of *Beyond Green*, and the experience gave me a platform for creating my own works of art.

During the spring semester I participated in the "Beyond Green Student Challenge," a juried student installation. With the support of the SCMA, I attempted to visually reinterpret scientific information through my own artwork using conversations I had in the Museum and with visiting artist Michael Rakowitz as a catalyst for my creative process. I also began to explore how my focus as a studio art major could help me respond to environmental concerns.

Working with *Beyond Green* compelled me to focus on issues I had not yet encountered in my classes, and the opportunity to serve in several roles within the Museum fueled my interest in museum studies. I am extremely thankful for the chance to be involved with the Smith College Museum of Art, and I recognize that my SCMA experience will greatly influence my college and career aspirations.

Sophia LaCava-Bohanan '08
Student Museum Educator and
Curatorial Intern, Spring '07

Left: Sophia LaCava-Bohanan, class of 2008 and Marieke Van Der Steenhoven, class of 2007, Student Museum Educators and Education interns, greet visitors at a Family Day program.

Center: Sophia LaCava-Bohanan leads a discussion of Betye Saar's *Ancestral Spirit Chair* among a group of third graders.

Right: Installation view of *WMS.06* by Sophia LaCava-Bohanan.



The Art of Structural Design: A Swiss Legacy allowed the Museum a unique opportunity to display objects that fall outside a traditional definition of art. Associate Professor Andrew J. Guswa of the Picker Engineering Program at Smith College approached the Museum with the idea to host the exhibition, which was comprised of models of bridges and structures designed by a group



Drew Guswa, Associate Professor of Engineering, Smith College, gives a gallery talk for teachers.

of Swiss engineers. Professor Guswa saw the exhibition as a vehicle for celebrating the art of structural design. It also provided his engineering students with the chance to see models of the structures that they were discussing in class.

The Art of Structural Design: A Swiss Legacy attracted students from Smith and throughout the community to explore the various—and sometimes surprising—connections between structural engineering and art making. Smith classes from a range of academic disciplines visited the exhibition. "I think the exhibition helped demonstrate that structural engineering is a creative discipline, requiring quantitative analysis, of course, but also inspiration and an aesthetic sense," remarked Professor Guswa of the interdisciplinary nature of the exhibit.

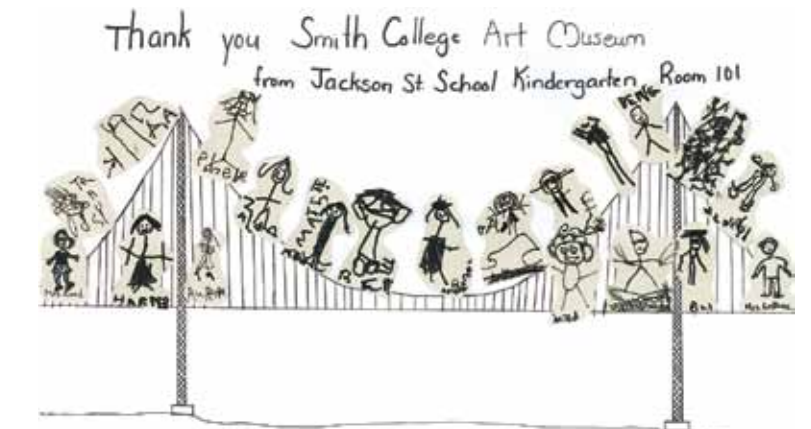
The exhibition also served as an excellent resource for public school teachers who, under revised Massachusetts curriculum standards, must find new ways to incorporate engineering concepts into their teaching. SCMA made the exhibition the focus of its fall 2006 educational programming, which included school tours, a teacher workshop and Family Day activities. The Museum also consulted with

The Art of Structural Design Connecting Art and Science

various faculty in the Picker Engineering Program to develop resource packets that visiting teachers could take back to their classrooms.

The collaboration that emerged between the Museum's education department and the faculty of the Picker Engineering Program proved tremendously fruitful. School visitation increased by 30 percent, compared with fall 2005, and the opening lecture delivered by the original organizer of the exhibition, David P. Billington, Princeton University, attracted twice the anticipated audience. This collaboration was successful in furthering SCMA's reach across campus and into the surrounding community.

Julie Zappia, Associate Curator of Education



Explorations in Teaching with Art

School and Teacher Programs at SCMA

Each year, SCMA offers a range of school tours and professional development opportunities for teachers, and consults with a Teacher Advisory Committee to improve and expand resources for educators.

In the 2006–2007 academic year, Museum staff organized school tours and teacher workshops about the exhibitions *The Art of Structural Design: A Swiss Legacy, Image and Devotion: Christian Art of Ethiopia*, and *Beyond Green: Toward a Sustainable Art*. Staff also created curriculum packages about these exhibitions to help teachers bring new concepts and ideas back to their classrooms. Trained Student Museum Educators led all school tours, which included age-appropriate, interactive discussions and hands-on activities.



Teachers learn about “healing scrolls” in a workshop on *Image and Devotion: Christian Art of Ethiopia*.

Esman '48, who spoke and answered questions about their professional journeys. A complete list of Student Museum Educators is found on page 33.

Student Museum Educator Program

Student Museum Educators (SMEs) volunteer to attend weekly training sessions, lead tours for school and adult groups, and assist with family events. SMEs learn tour techniques, further their knowledge of art history and develop public speaking skills through sessions led by Museum education staff, curators, scholars and artists. In April, SMEs took a day trip to New York to visit with Thelma Golden '87, director of the Studio Museum of Harlem, and gallerist Rosa

Interdisciplinary Teaching in the Museum

“The Teaching of Visual Arts,” Education and Child Study 305
Cathy Topal, Teacher of Visual Arts

“Chemistry in Art,” Chemistry 100
Lale Burk, Senior Lecturer in Chemistry and David Dempsey, Associate Director of Museum Services, SCMA

“Topics in Contemporary Literature and Culture,” French 230
Fabienne Bullot, Lecturer in French Studies

“The Tea Ceremony and Japanese Culture,” East Asian Languages and Literature 247
Thomas Rohlich, Director of East Asian Languages and Literature, Smith College, and Samuel C. Morse, Consulting Curator for Asian Art, SCMA and Professor in the Departments of Art and Art History and Asian Languages and Civilizations, Amherst College

“The Art of India,” Art 226
Ajay Sinha, Chair of Art History, Mount Holyoke College Art Department



School children become the artists through hands-on projects inspired by artworks they have seen and topics they have discussed on their tour.

Broadening Audience Family Days and Second Fridays

SCMA added to its family-oriented offerings this year and enriched ongoing programs through new approaches and interdisciplinary collaborations. These special events gave SMEs, interns, and volunteers hands-on experience with planning and implementing educational programs. At “Bridges!” Family Day in November 2006, engineering students demonstrated the phenomenon of material resonance to young visitors. At the March 2007 “Beyond Green” Family Day program, participants learned from exhibition artists how to make solar cookers. Spanish-speaking volunteers were present and materials appeared in English and Spanish. SCMA also covered transportation costs for families from the Gerena School, a charter school serving low-income families in Springfield, Massachusetts.

SCMA also opened its doors to families on the second Friday of each month during 2006–2007 for hands-on activities inspired by current exhibitions. All of these activities—from crayon etching to bridge building—were free and open to the public.



Children concentrate on hands-on art projects at Family Day programs. Left: “Beyond Green” Right: “Bridges!”



Gallery Talks and Lectures

Dozens of artists and art historians shared their expertise and passion with members of SCMA's community through gallery talks, lectures, and panel discussions throughout the year. Of special note, Marilyn Martin Rhie, Jessie Wells Post Professor of Art and East Asian Studies, Smith College, gave a gallery talk on selections from the special exhibition, *Aesthetics of the Sacred: The Buddhist Art of Tibet*, at the May 2007 Second Friday program. In addition, Gary Vikan, Director and Curator of Medieval Art at the Walters Art Museum in Baltimore, spoke about the exhibition *Image and Devotion: Christian Art from Ethiopia* (fall 2006); David Billington, Gordon Y. S. Wu Professor of Civil and Environmental Engineering and Director of the Program in Architecture and Engineering, Princeton University, lectured on *The Art of Structural Design* (fall 2006); and Joseph Leo Koerner, art historian, illuminated the work of 15th- and 16th-century painter Hieronymous Bosch, as the Fourth Annual Dulcy B. Miller Lecturer in Art and Art History (spring 2007).



Marilyn Rhie, Professor of East Asian Studies, Smith College gives a gallery talk on Buddhist art at the May 2007 Second Friday program.

LEADERSHIP & GIVING



The Museum Visiting Committee

Visiting Committee Honorary Members

Charles Parkhurst
Sue Welsh Reed '58

Visiting Committee Members

Ann Weinbaum Solomon '59, Chair
Susan Lounsbury Brundage '71
Jane Chace Carroll '53
Victoria Chan-Palay '65
Joan Lebold Cohen '54
Wendy M. Cromwell '86
Peggy Block Danziger '62
Thelma Golden '87
Janet Wright Ketcham '53
Sarah Griswold Leahy '54
Ellen W. Lee '71
Margot Tishman Linton '52
Suzanne Folds McCullagh '73
Eliot Chace Nolen '54
Janice Carlson Oresman '55
Rebecca Rabinow '88
Bonnie Johnson Sacerdote '64
Betty Hamady Sams '57

Louisa Stude Sarofim '58
Marc A. Simpson
Judith Plesser Targan '53
Jane M. Timken '64
Hendrik van Os
Isabel Brown Wilson '53
Amy Namowitz Worthen '67

Asian Art Task Force

Joan Lebold Cohen '54, Chair
Nancy Colman Blume '61
Jane Chace Carroll '53
Ying Chua '95
Victoria Chan-Palay '65
Peggy Block Danziger '62
Walter Denny
Nancy Boeschstein Fessenden '50
Joan Leiman Jacobson '47
Wan Kyun Rha Kim '60
Alix Hoch Laager '80
Sarah Griswold Leahy '54
Julia Meech '63
Yamini Mehta '93
Samuel Morse
Eliot Chace Nolen '54



William Sidney Mount. American, 1807–1868.
Solomon Townsend Nicoll, 1846. Oil on canvas.
Gift of DeLancey Nicoll III in honor of Jessica Fleming Nicoll, class of 1983.

Tom Rohlich
Betty Hamady Sams '57
Louisa Stude Sarofim '58
Ann Weinbaum Solomon '59
Carlyn Koch Steiner '67
Hilary Tolman '87
Martha Manchester Wright '60

The Tryon Associates

The Tryon Associates was founded in 1990 to provide annual support for SCMA.

Elsie Vanderbilt Aidinoff '53
Patricia Moore Ashton '53
Jane Chace Carroll '53 and Robert W. Carroll
Victoria Chan-Palay '65
Joan Lebold Cohen '54 and Jerome A. Cohen
Susan Komroff Cohen '62 and Bruce Cohen
Ann Kane Collier '55 and Marvin Collier
Joyce Berger Cowin '51
Wendy M. Cromwell '86
Peggy Block Danziger '62 and Richard M. Danziger
Valerie Tishman Diker '59 and Charles Diker
John Eastman
Christina Janson Eldridge '53
Georgianna Bray Erskine '54
Elizabeth Mugar Eveillard '69
Nancy Boeschstein Fessenden '50 and Hart Fessenden
Jacqueline Jones Foster '54
Catherine Blanton Freedberg '64
Margot Eisner Freedman '62
Joanne Sawhill Griffin '72 and Peter Griffin
Susanne Barber Grousbeck '58
Rebecca Barclay Humphrey '48
Eileen Casey Jachym '75

Joan Leiman Jacobson '47 and Dr. Julius H. Jacobson II
Alice Drucker Kaplan '58
Ann F. Kaplan '67 and Robert Fippinger
Elizabeth Sessions Kelsey '55 and Thomas V. A. Kelsey
Janet Wright Ketcham '53
Alice Blumenfeld Kramer '52 and Arthur B. Kramer
Sarah Griswold Leahy '54
Phoebe Reese Lewis '51 and Jack Lewis
Margot Tishman Linton '52 and Robert Linton
Marilyn Graves Lummis '54
Ann Safford Mandel '53 and Stephen F. Mandel
Enid Wien Morse '54
Diane Allen Nixon '57
Eliot Chace Nolen '54 and Wilson Nolen
Janice Carlson Oresman '55 and Roger Oresman
Irving W. Rabb (Charlotte Frank Rabb '35, deceased)
Susan Wechsler Rose '63 and Elihu Rose
Bonnie Johnson Sacerdote '64 and Peter Sacerdote
Betty Hamady Sams '57
Louisa Stude Sarofim '58
Adrian Austin Shelby '55
John J. F. Sherrerd (Kathleen Compton Sherrerd '54, deceased)
Susan Spencer Small '48
Ann Weinbaum Solomon '59 and Richard Solomon
Roberta Peck Sommers '64 and Jeffrey Sommers
Carlyn Koch Steiner '67



William Bailey. American, born 1930.
Still Life, Piazza San Francesco, 1982.
Casein on paper. Gift in loving memory
of Mrs. Rita Rich Fraad, class of 1937.

Ellen Braestrup Strickler '57 and Dan Strickler
Judith Plesser Targan '53
Judy Emil Tenney '49
Jane M. Timken '64
Lucy Keith Tittmann '53
Roberta Rosenberg Weinstein '67 and David Weinstein
Elsie Trask Wheeler '54
Anita Volz Wien '62
Isabel Brown Wilson '53 and Wallace S. Wilson
Martha Manchester Wright '60

GIFTS TO THE MUSEUM

The following gifts and grants were made to SCMA during the 2007 fiscal year: July 1, 2006 through June 30, 2007.

Gifts of Funds for Other Purposes

Anonymous

Caroline Dwight Bain '44

Rena Glazier Bransten '54

Laura Resnic Brounstein '84

Joan Lebold Cohen '54

Joan Lebold Cohen '54, in memory of Elsie Trask (mother of Elsie Trask Wheeler '54)

Craig Felton

Fred Bergfors and Margaret Sandberg Foundation, Inc., through the initiative of Constance Bergfors '52

Grunebaum Family Fund through the initiative of Irene Koppel, in honor of Victoria Koppel '83 and Erika Koppel Arevuo '81

Wendy MacKenzie Haller '62

Janet Upjohn Stearns Charitable Trust through the initiative of Janet Ley '52, in memory of Janet Upjohn Stearns

Deborah Ross Jannotta '56 and Edgar Jannotta

The John W. Cavanaugh Family Foundation through the initiative of Lisa Cavanaugh Wiese '78

Wan Kyun Rha Kim '60 and Andrew Kim

Marilyn MacLellan

Alice Greene McKinney '47 and E. Kirk McKinney

Diane Allen Nixon '57

Patricia Tucker GST Exempt through the initiative of Joan Lebold Cohen '54

Sue Welsh Reed '58

Carol Raybin Sirot '54

Sit Investment Associates through the initiative of Wan Kyun Rha Kim '60 and Andrew Kim

Ann Weinbaum Solomon '59 and Richard Solomon

Molly Duff Woehrlin '53 and William Woehrlin

Ann Alderman Wood '52, in memory of Eleanor Wheelwright Crunden '52

Grant and Foundation Support

Art Mentor Foundation Lucerne, Switzerland

Artist's Resource Trust Fund of the Berkshire Taconic Community Foundation

The Brown Foundation, Inc. of Houston through the initiative of Louisa Stude Sarofim '58

Massachusetts Cultural Council, a State Agency (General Operational Support and Museums10)

National Endowment for the Arts, a Federal Agency

Gifts of Funds to Endowment

Lamson Blaney, in memory of Louise Walker Blaney '39

Julia Johnson Lindquist '62, in memory of Louise Walker Blaney '39

Diane Allen Nixon '57

Ann Weinbaum Solomon '59 and Richard Solomon

Carlyn Koch Steiner '67

Nancy Marshall Strebeigh '41, in memory of Louise Walker Blaney '39

Gifts in Honor of Ann D. Johnson

The following donors made contributions to the Museum during the 2007 fiscal year in honor of Ann D. Johnson's 22 years of service to SCMA, which concluded on June 15, 2006.

Ann Kane Collier '55

Peggy Block Danziger '62

Great Island Foundation through the initiative of Eliot Chace Nolen '54

Ann Weinbaum Solomon '59 and Richard Solomon

Contributors to the 2006–2007 Annual Appeal

Funds from the Annual Appeal 2006–2007, "Expanding Virtual Access: Digital Documentation of the Permanent Collection," continue to support the expansion of the Museum's digital archives. We are pleased to acknowledge the following donors who contributed to the Annual Appeal.

Mildred Allenchey

Maryann Ashworth '00

Dee Bates, in honor of Sharon Poirrer '80

Lamson Blaney

Christina Blust '87

Rena Glazier Bransten '54

William Cloutier

Martha Clute '48

Joan Lebold Cohen '54

Lois Cohen

Ann Kane Collier '55 and Marvin Collier

Kristen Crean '92

Priscilla Cunningham '58

Peggy Block Danziger '62 and Richard M. Danziger

Andree Demay

Eileen Rooney Driscoll '49

Marcy Eisenberg

Christina Janson Eldridge '53

Suzannah Fabing and James Muspratt

Barbara Newman Findlay '44

Elaine Hornick Finkelstein '51

Gay Flood '57

Susan Gallo '76

Susan and Richard Goldie

Elizabeth Oyen Graham '79

Elizabeth Stillinger Guthman '60

Judith Hover Harper '59

Susan Lampman Hill '63

Anne Hornung-Soukup '74

Irving and Charlotte Rabb Fund through the initiative of Irving W. Rabb (Charlotte Frank Rabb '35, deceased)

Barbara Petchesky Jakobson '54

Janet Wright Ketcham '53

Alice Drucker Kaplan '58

Wendy Tarlow Kaplan '65

Sarah Griswold Leahy '54

Ellen Lee '71

Mack Lee

Margot Tishman Linton '52

Cathy Longinotto '70

Gwendolyn O'Brien Marsh '60

Eileen Marum '05

Suzanne Folds McCullagh '73

Jaelyn Merlet '02

Carolina Miranda-Silva '93

Elizabeth Moore '93

Morningstar Family Foundation through the initiative of Jane Nathanson Morningstar '40

Ruth Wilkinson Morrow '45

Harriet Bixler Naughton '42

Kristen Nesholm '94

Ann Colton Nussbaum '63

Patricia Olmstead

Janice Carlson Oresman '55

Jeanne Slate Overstreet '40

Frances Garber Pepper '62 and John Pepper

Sally Whitney Pillsbury '46

Point Gammon Foundation through the initiative of Jane Chace Carroll '53

Sally Wallace Rand '47

Donald Resnick

Ambrose Roche

Bonnie Johnson Sacerdote '64

Betty Hamady Sams '57

Sherrerd Foundation through the initiative of John J.F. Sherrerd (Kathleen Compton Sherrerd '54, deceased)

Emma-Marie Snedeker '53

Morgan Henning Stebbins '66

Alison Stern '95

Dorothy Carsey Sumner '57

Gretchen and Richard Swibold

Lois Hoffman Thompson '66

Joyce Peterson Thurmer '52

Cathy and Samuel Topal

Shavaun Robinson Towers '47

Khanh-Van Tran '05

Jane Turano-Thompson '73

Sidney Smith Walker '41

Janet Boorky Wallstein '71

Cynthia Woods Weinand '57

Martha Manchester Wright '60

Sally Brudno Wyner '48

Lawrence Zingesser

Gifts of Funds to Support an Acquisition by a Korean-American Woman Artist

The Museum is grateful to KASS (Korean-American Students of Smith) for its initiative to raise funds for the purchase of *Movement* (2001), an installation piece by the Korean-American artist Yong Soon Min. *Movement* was originally commissioned by the Asia Society, New York, as one of eight prestigious commissions made to leading Asian and Asian-American artists in 2001. In September 2007, KASS/KAF (Korean Arts Foundation founded by KASS) members successfully reached their fundraising goal. Plans are now being made to install *Movement* at SCMA in October 2008 and to mount a small accompanying exhibition of contemporary Korean and Korean-American art.

Listed here are the KASS/KAF contributors whose gifts were received during the 2007 fiscal year.

Ji Yon Bang '97

Jennifer Choe '93

Caroline Kim '89

Jung Kim '93, in honor of Gil Ja Kim and Jong Dai Kim

Susan Moon '92

Audrey Paek '92, in memory of Joyce Chiang '92

Maryann Park '84

WITH THANKS TO THE MUSEUM'S MEMBERS

Membership dues provide essential support for the Museum's programs and exhibitions. The following individuals were Members at the Contributor level or above during the 2007 fiscal year.

Guilliaem Aertsen
 Marie and Nicholas Afragola
 Joan Greenberg Alexander '55
 Ann Alpers '84
 Ann Draper Arthur '45
 Adrienne Auerswald '43
 Carolyn Getz Bartholomew '40
 Hanna Higgins Bartlett '60
 Lisa Baskin
 Dee Bates
 Mary Fiske Beck '56
 Lucy Wilson Benson '49
 Peggy Tenebaum Berman '47
 Bettina Loram Burr '68
 Edith Stenhouse Bingham '55
 Mary Jean Schmidt Blasdale '65
 Sarah Murdock Bolster '50
 Susan Bourque
 Susan Boyd '60

Barbara Braatz '79
 Anne Brower '60
 Sarah Merrill Brown '49
 Susan Brundage '71
 Edith and Frederick Byron
 Kathryn Campbell '85
 Ann and Jeffrey Caplan
 Carla Carpenter
 Jean Foyles Chamberlain '44
 Elfrida Smith Chappell '35
 Carol Christ and Paul Alpers
 Mary Clemesha '41
 Martha Clute '48
 The Certe Foundation Inc. through the initiative of Connie Pollack Cohen '55
 Marilyn Levin Cohen '68
 Emily McKnight Corry '53
 Sara Crawley
 Hilary Holcomb Creighton '55
 Cheryl Cummer '62
 Susan Russe Daniel-Dreyfus '62
 Lisa and Porter Dawson
 Barbara Rausch Deely '42

M. Quinn Ellis Delaney '50
 Laura and Adam Dinwiddie
 Sarah Cowles Doering '48
 Eileen Rooney Driscoll '49
 Nancy Ruddell Duck '63
 Herman Edelberg
 Louise Eliasof '87
 Barbara Chilcott Esten '46
 Wendy and Morris Evans
 Suzannah Fabing and James Muspratt
 Nancy Ferguson '76
 Gay Flood '57
 Jane Nichols Fogg '54
 Joan Butler Ford '55, in memory of G. Henriette Butler MacVane '49
 Molly Rulon-Miller Fowler '57
 Ruth Weiss Friendly '45
 Virginia Twining Gardner '58
 Arts & Letters Foundation Inc. through the initiative of Janice Brody Gerton '41
 Jennifer Giasone '03
 Lile Rasmuson Gibbons '64
 Walter Gibson

James Gipe
 Sarah Gire '92
 Sarah Sather Given '48
 Jan Fullgraf Golann '71
 Alice Hildreth Goldman '62
 Natalie Stolk Graham '49
 Elizabeth Stillinger Guthman '60
 Stephanie Hammer '76
 Lisa Bush Hankin '82 and Steven M. Hankin
 Judith Hover Harper '59
 Mary Hidden '51
 Helene Zimmermann Hill '50
 Susan Lampman Hill '63
 L. Cecily Hines '73
 Janet and Kenneth Hoffman
 B. Elizabeth Horner '40
 Anne Hornung-Soukup '74, in memory of Elizabeth Parker Soukup '45
 Ma Doe Htun '84
 Harriet Hubbard '85
 Hugh and Frances Foster Trust through the initiative of Ceseli Dillingham Foster '64 and Hugh Foster
 Marianne Jasmine '85
 Alice Drucker Kaplan '58
 Nancy Booth Kelly '56
 Amelia Pollack Kemp '87
 Elizabeth Hummel Kinney '57
 Carolyn Grinnell Kirkpatrick '63

Ruth Kohler '63
 Roberta Yenkin Krakoff '59
 Valerie Skorka Lafleur '64
 Rosemary Laporte '03
 Alla and Jaroslaw Leshko
 Alphonse Leure-duPree
 Marilyn Lampert Levine '64 and Michael Levine
 Mary Lynne Weil Levy '49 and Herbert Levy
 Susan Badian Lindenauer '61
 Deborah Lipton '67
 Frances Larrabee Low '50
 Ellen Canby Lynch '70
 Patricia Mail '65
 Mansur-Ryan Charitable Trust through the initiative of Claire Mansur '76
 Suzanne Folds McCullagh '73
 Kate Robertson McGraw '50
 Anne Kane McGuire '56
 Mary McPherson '57
 Ann Milne '72
 Sharon Mitchell
 Morningstar Family Foundation through the initiative of Jane Nathanson Morningstar '40
 Mary Knoblauch Morrison '36
 Mary Shaw Newman '50
 Richard Newton
 Christine Young Nicolov '73
 Lisa Lorch Novick '89



Museum Members and others view works by Leonard Baskin at the opening of *Medea and Her Sisters: Leonard Baskin Images of Women* on June 15, 2007.

Faith Wilkoff Nusbaum '47
 Ann Colton Nussbaum '63
 Judy Oberlander '78
 Maureen O'Brien '54
 Deidre O'Flaherty '70
 Marcia Lontz Osborn '53
 Elizabeth Parker '76
 Frances Garber Pepper '62 and John Pepper
 Carole Manishin Pesner '59
 Elizabeth Petegorsky '85 and Stephen Petegorsky

Sally Whitney Pillsbury '46

Mary Damiano Pinney '58

Nicholas Porter

Susan Proctor '68

Rebecca Rabinow '88

Sally Wallace Rand '47

Janet Rassweiler '80

Nancy Miller Redpath '29

Sue Walsh Reed '58

Ann Vail Roberts '50 and William Roberts

Letitia Roberts '64

Wakako Rohlich '98

Katherine Santomassino Rostand '65 and Stephen Rostand

Elizabeth Woodbury Rowe '59

Rita Sepowitz Saltz '60

Dorothy Massie Sawyer '55

Marie-Josee Schorp '86

Ann Schafer Schwartz '58 and Thomas Schwartz

Susan Sittler '77

Jerrie Marcus Smith '57 and Frederick Smith

Emma-Marie Snedeker '53

Cynthia Sommer '75

Margaret Kulmatiski Sperry '72

Joaneath Spicer '65

Judith Feldman Steinberg '57, in memory of
Leslie Blackman '57, Patricia Janis Broder '57,
Allie Kelley Dittmar '57 and Judith Kayser Ferriter '57

Elizabeth Stone

Jane Wilson Stover '33

Martha Wood Subber '69, in memory of
Ruth Pierson Churchill '19

Dorothy Carsey Sumner '57

May Collacott Targett '52

Lois Hoffman Thompson '66

Joyce Peterson Thurmer '52

Sandra Tullius '84

Jane Van Norman Turano-Thompson '73

Lucy Bryans Van Meter '83

Anne Bennett Vernon '53

Deborah Smith Vernon '50

Barbara Wham Waite '56

Janet Boorky Wallstein '71

Edward Welch

Marsha Wiseheart '60

Robin Hansen Withington '54 and Frederic Withington

Catheryn Yum '86

Karen Zens '71

Matching Gifts

Metropolitan Life Foundation

Xerox Foundation



Learning Group, *Collected Material Dwelling, Model 1:1*, 2005.
Mixed media. Collection of the artists; Commission, Smart Museum of Art,
University of Chicago. From the exhibition *Beyond Green: Toward a
Sustainable Art* (February 2–April 15, 2007).

JULY 2006—JUNE 2007

EXHIBITIONS

September 30 – December 31, 2006
*Image and Devotion: Christian Art of Ethiopia
from the Walters Art Museum*
Sacerdote Gallery, 1st floor

July 14 – September 10, 2006
Sized Up: Large Scale Paintings and Works on Paper
Sacerdote Gallery, 1st floor

July 28 – October 15, 2006
Face to Face: Looking at Portraiture
Winslow Teaching Gallery, lower level
Summer Institute in Art Museum Studies,
student exhibition

August 25 – December 10, 2006
The Art of Structural Design: A Swiss Legacy
Dalrymple Gallery, lower level

September 1 – October 29, 2006
The Early Modern Painter-Etcher
Nixon Gallery, 2nd floor

September 8 – December 3, 2006
Garry Winogrand: Women are Beautiful
Cunningham Corridor, 2nd floor

October 20, 2006 – November 25, 2007
*The Coronation of the Virgin: A Major Acquisition
of a Northern Renaissance Altarpiece*
Ketcham Gallery, 3rd floor

November 11, 2006 – February 11, 2007
Godless Communists: Soviet Anti-Religious Propaganda
Nixon Gallery, 2nd floor

January 19 – May 27, 2007
*Fashioning Tradition: Japanese Tea Wares
from the Sixteenth and Seventeenth Centuries*
Sacerdote Gallery, 1st floor

February 2 – April 15, 2007
Beyond Green: Toward a Sustainable Art
Targan and Dalrymple Galleries, lower level

February 23 – June 17, 2007
Earthworks on Paper
Nixon Gallery, 2nd floor



April 13 – July 8, 2007
*Abandoned Beauty: A Photographic Excursion
through 19th-Century Egypt*
Cunningham Corridor, 2nd floor

May 4 – August 4, 2007:
Aesthetics of the Sacred: The Buddhist Art of Tibet
Dalrymple Gallery, lower level

May 15 – June 10, 2007
*20/20 Vision: Contemporary Japanese Prints
in Honor of Hilary Tolman '87*
Winslow Teaching Gallery, lower level

May 18 – September 9, 2007
Framework III: Restoring the Boundaries
Chace Alcove, 3rd floor

June 15 – September 9, 2007
*Medea and Her Sisters: Leonard Baskin's
Images of Women*
Sacerdote Gallery, 1st floor

June 29 – September 30, 2007
Ansel Adams
Nixon Gallery, 2nd floor

Left: View of a seventeenth-century triptych in the exhibition *Image
and Devotion: Christian Art of Ethiopia from the Walters Art Museum*
(September 30–December 31, 2006).

Right: *Toriawase* installation, from the exhibition *Fashioning Tradition:
Japanese Tea Wares from the Sixteenth and Seventeenth Centuries*
(January 19–May 27, 2007).

MUSEUM STAFF

Stacey Anasazi
Financial and Systems Coordinator

Margi Caplan
Membership and Marketing Director

Plum Crane (Part-time)
Admissions Assistant

David Dempsey
Associate Director for Museum Services

Martha Ebner (Part-time)
Marketing Coordinator

Taiga Ermansons (Part-time)
Education Program Planner

Nan Fleming (Part-time)
Museum Shop Manager

Aprile Gallant
Curator of Prints, Drawings and Photographs

Susan Gelotte (Part-time)
Museum Shop Assistant

Tania Hart (Part-time)
Admissions Assistant

Kelly Holbert
Exhibition Coordinator

Henriette Kets de Vries
Cunningham Center Manager

Louise M. Kahrman
Membership and Gifts Assistant

Louise M. Krieger
Assistant to the Director

Louise Laplante
Collections Manager/Registrar

Emily Lewis (Part-time)
Admissions Assistant

Ann Mayo
Manager of Security and Guest Services

Linda Muehlig
Associate Director for Curatorial Affairs and
Senior Curator of Painting and Sculpture

Ann E. Musser
Curator of Education

William F. Myers
Chief Preparator

Jessica Nicoll
Director and Chief Curator

Richard Turschman
Assistant Manager for Security

Julie Zappia
Associate Curator of Education

Security Systems Specialists:
Robert Anderson
David Andrews
Heather Clark
Michelle Cotugno
Patrick Gaudet
Patricia Jackson
Mary Klaes
Gail Olkowski
Francis Taylor



Visitors to the permanent collection, various galleries.

STUDENT ASSISTANTS: Work-Study, Interns and Volunteers

Conservation

Latishia Allen '07, Megan Bernstein '07, Cheryl Caskey, UMass Amherst, Christina Eliopoulos AC, Sarah Fortini, UMass Amherst, Korri Krajccek '07, Julia Lonergan, Tufts University, Michele Metta-Kahn AC, Rebecca Meyer '08, Andrea Rosen '09, Lisa Shulka AC, Tran Vo '08, Tesia Volker, UMass Amherst

Cunningham Center

Rina Goldfield, Cooper Union, Julia Haas '08, Laura Ingabire '09, Jenny Shaw '08, Kerianne Shaw AC '07J, Lisa Shulka AC, Lauren Van Haaften-Schick, Hampshire College, Nina Wilkinson '07

Director's Office

Azmi Ahmad '07, Francesca Albrezzi '09, Rebecca Counter, Cornell, Pamela Dods AC, Megan Feingold '07, Katherine Kwolek, Merrimack College, Sally Reede '08, Aislinn Smith '08

Education

Emily Casey '09, Cheryl Caskey, UMass Amherst, Rachel Dines '07, Eleanor Grano '09, Sophia LaCava-Bohanan '08, Emily Melchin '08, Jordan Smith '06, Julie Thomson, UMass Amherst, Marieke Van Der Steenhoven '07

Exhibitions and Installation

Julie A. Lonergan, Tufts University

Marketing, PR, and Membership

Kika Gilbert '08, Caitlin Gleason '09, Sarah-Neel Smith '07, Elizabeth Robinson '08, Elizabeth Woock '08, Mahnoor Yawar '09J

Museum Shop

Eileen Kessler '07, Paula Messing '07, Ashley Zurc '07

Student Museum Educators

Selene Arrazolo '07, Alexandra Barrows '09, Elizabeth Bergeron '09, Gretchen Burch '08, Jennifer Clark '09, Rachel Crowe '09, Rachel Dines '07, Rachel Duncan '09, Caitlin Flynn '09, Harleen Gill '09, Anne Goodner '07, Eleanor Grano '09, Leah Gross '07, Sophia LaCava-Bohanan '08, Lesley MacGregor '07, Sasha Mann '09, Elana Marion '09, Emily Melchin '08, Kelly Montana '09, Linda Nechamkin '09, Vivian Phung '08, Andrea Rosen '09, Sawako Shirota '09, Lauren Vollono '08, Kam Yan '08, Marieke Van Der Steenhoven '07, JoAnna Wall '07



Left to right: Emily Burkman, class of 2009, Jackie Finch, Pace University, class of 2009, Lauren Vollono, class of 2008, Brittany Diaz, class of 2009 at Bridges! Family Day.

